



SKY RIDGE MEDICAL CENTER PEDIATRIC RESOURCES

ROCKY MOUNTAIN HOSPITAL FOR CHILDREN MULTISPECIALTY CENTER AT SKY RIDGE, EVERGREEN BUILDING

Rocky Mountain Pediatric ENT

1st, 3rd, 5th Monday, all day

Sheri Poznanovic, MD

10107 RidgeGate Pkwy., #330, Lone Tree, CO 80124

PH: 303-301-9019/F: 303-861-6254

Rocky Mountain Pediatric Hematology/Oncology

1st & 3rd Wednesday morning

Brad Ball, MD

Jennifer Clark, MD

10107 RidgeGate Pkwy., #330, Lone Tree, CO 80124

PH: 303-832-2344/F: 303-832-3721

Rocky Mountain Pediatric Neurology

2nd and 4th Wednesday morning

Ramon Cuevas, MD

10107 RidgeGate Pkwy., #330, Lone Tree, CO 80124

PH: 303-226-7230/F: 866-401-9731

Rocky Mountain Pediatric Urology

2nd and 4th Monday afternoon and Tuesday afternoon

Peter D. Furness, III, MD

Bruce Blyth, MD

10107 RidgeGate Pkwy., #330, Lone Tree, CO 80124

PH: 303-839-7200/F: 303-839-7229

ROCKY MOUNTAIN PEDIATRIC ORTHOPEDIC, SPORTS MEDICINE, CONCUSSION AND SCOLIOSIS & SPINE, EVERGREEN BUILDING

Daily at this location

Orthopedics:

Laurel Benson, MD

Brooke Pengel, MD

Andrew Pytiak, MD

Jaren Riley, MD

Kristina Walick, MD

Louann Berroa, PA-C

Zacc Ivy, PA-C

Jordan Spira, PA-C

10107 RidgeGate Pkwy., #310, Lone Tree, CO 80124

PH: 303-861-2663/F: 303-861-4741

Concussion:

Michelle Chetham, MD

Sue Kirelik, MD

Karen McAvoy, PsyD

ROCKY MOUNTAIN PEDIATRIC SURGERY, EVERGREEN BUILDING

Monday afternoon, Thursday morning and Friday morning

Sandra Kay, MD

Steve Rothenberg, MD

Alison Covak, PA-C

Barbara Jones, FNP-C

Brittney Knudson, PA-C

10107 RidgeGate Pkwy., #310, Lone Tree, CO 80124

PH: 303-839-6001/F: 303-839-6033

MORE ON BACK ----->

SKY RIDGE MEDICAL CENTER PEDIATRIC RESOURCES

Pediatric Emergency Department 720-225-KIDZ (5439)

Dave Stocker, MD

Medical Director, Pediatric Emergency Department

720-225-5149

Sue Hoffman, MD

Medical Director, Inpatient Unit

303-722-5516

Joe Toney, MD

Medical Director, NICU

303-839-7440

Fera Butts, RN

Director, Pediatric Emergency Department and Pediatric Services

720-225-1935

Dana Ackerman

RMHC Physician Relations Manager

303-945-9078

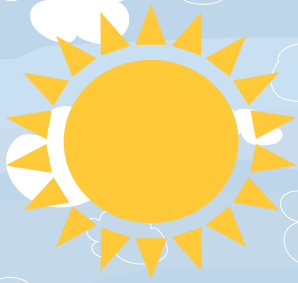
Natalie Cherry

Sky Ridge Physician Relations Manager

303-250-1385

This is not a comprehensive list of pediatric specialists, but includes physicians within a five-mile radius of Sky Ridge.

Go to skyridgemedcenter.com for a complete list.



SKY RIDGE MEDICAL CENTER PEDIATRIC RESOURCES

Allergy & Asthma Care & Prevention

Daily at this location

Lora Stewart, MD
10099 RidgeGate Pkwy., #400, Lone Tree, CO 80124
PH: 303-706-9923/F: 303-706-0904

Blue Sky Neurology

Wednesday, all day

Michael Pearlman, MD
10099 RidgeGate Pkwy., #480, Lone Tree, CO 80124
PH: 303-781-4885/F: 720-274-0064

Children's Eye Physicians

Daily at this location

Justin Arbuckle, MD
Christopher Bardorf, MD
Justin Cohen, MD
Diana DeSantis, MD
Adrienne Ruth, MD
Anna Steele, MD
9094 E. Mineral Ave., #200, Centennial, CO 80112
PH: 720-420-3636/F: 720-420-3637

Pediatric Cardiology

Daily at this location

Samuel Brescia, MD
Douglas Christensen, MD
David Miller, MD
Jane Nydam, MD
Michael Pettersen, MD
10099 RidgeGate Pkwy., #300, Lone Tree, CO 80124
PH: 303-860-9933/F: 303-839-5844

Pediatric Endocrine Associates

Daily at this location

Clifford Bloch, MD
Alicia Marks, MD
Sunil Nayak, MD
8200 E Bellevue Ave., #510E
Greenwood Village, CO 80111
PH: 303-783-3883/F: 303-783-3800

Rocky Mountain Pediatric Endocrinology

Daily at this location

Kyla Koontz, MD
Aristides Maniatis, MD
7336 S Yosemite St., #200, Centennial, CO 80112
PH: 720-420-3636/F: 720-420-3637

Rocky Mountain Pediatric Gastroenterology

Daily at this location

Jose Barrios, MD
Chad Best, MD
Kyle Kusek, MD
Sandy Oesterreicher, MD
Carrie Reynolds, MD
Ted Stathos, MD
9224 Teddy Lane, #200, Lone Tree, CO 80124
PH: 303-790-1515/F: 303-790-1989

Rocky Mountain Pediatric Pulmonology

1st Thursday all day, 2nd Wednesday all day, 3rd Thursday evening

Margarita Guarin, MD
Lee Rusakow, MD
9224 Teddy Lane, #200, Lone Tree, CO 80124
PH: 303-831-9853/F: 303-832-3533

Urology Associates

Daily at this location

Nina Casanova, MD
Stan Galansky, MD
10450 Park Meadows Dr., #202, Lone Tree, CO, 80124
PH: 303-733-8848/F: 303-733-0106



Rocky Mountain
Hospital for Children

At Sky Ridge Medical Center

