



# SKY RIDGE MEDICAL CENTER PEDIATRIC RESOURCES

**ROCKY MOUNTAIN HOSPITAL FOR CHILDREN  
MULTISPECIALTY CENTER AT SKY RIDGE,  
EVERGREEN BUILDING**

**Rocky Mountain Pediatric ENT  
1st, 3rd, 5th Monday, all day**

Sheri Poznanovic, MD  
10107 RidgeGate Pkwy., #330, Lone Tree, CO 80124  
PH: 303-301-9019/F: 303-861-6254

**Rocky Mountain Pediatric Hematology/Oncology  
1st & 3rd Wednesday morning**

Brad Ball, MD  
Jennifer Clark, MD  
10107 RidgeGate Pkwy., #330, Lone Tree, CO 80124  
PH: 303-832-2344/F: 303-832-3721

**Rocky Mountain Pediatric Neurology  
2nd and 4th Wednesday morning**

Ramon Cuevas, MD  
10107 RidgeGate Pkwy., #330, Lone Tree, CO 80124  
PH: 303-226-7230/F: 866-401-9731

**Rocky Mountain Pediatric Urology  
2nd and 4th Monday afternoon**

Peter D. Furness, III, MD  
10107 RidgeGate Pkwy., #330, Lone Tree, CO 80124  
PH: 303-839-7200/F: 303-839-7229

**ROCKY MOUNTAIN PEDIATRIC ORTHOPEDIC,  
SPORTS MEDICINE, CONCUSSION AND  
SCOLIOSIS & SPINE, EVERGREEN BUILDING**

**Daily at this location**

**Orthopedics:**

Laurel Benson, MD  
Brooke Pengel, MD  
Andrew Pytiak, MD  
Jaren Riley, MD  
Kristina Walick, MD  
Louann Berroa, PA-C  
Zacc Ivy, PA-C  
Jordan Spira, PA-C  
10107 RidgeGate Pkwy., #310, Lone Tree, CO 80124  
PH: 303-861-2663/F: 303-861-4741

**Concussion:**

Michelle Chetham, MD  
Sue Kirelik, MD  
Karen McAvoy, PsyD

**ROCKY MOUNTAIN PEDIATRIC SURGERY,  
EVERGREEN BUILDING**

**Monday afternoon, Thursday morning and  
Friday morning**

Sandra Kay, MD  
Steve Rothenberg, MD  
Alison Covak, PA-C  
Barbara Jones, FNP-C  
Brittney Knudson, PA-C  
10107 RidgeGate Pkwy., #310, Lone Tree, CO 80124  
PH: 303-839-6001/F: 303-839-6033

**MORE ON BACK ----->**

## SKY RIDGE MEDICAL CENTER PEDIATRIC RESOURCES

Pediatric Emergency Department 720-225-KIDZ (5439)

Dave Stocker, MD  
Medical Director, Pediatric Emergency Department  
720-225-5149

Sue Hoffman, MD  
Medical Director, Inpatient Unit  
303-722-5516

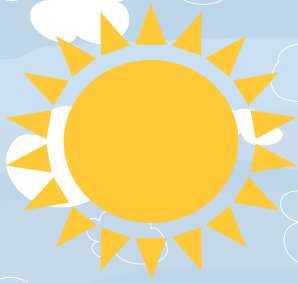
Joe Toney, MD  
Medical Director, NICU  
303-839-7440

Fera Butts, RN  
Director, Pediatric Emergency Department and  
Pediatric Services  
720-225-1935

Anna Davis  
RMHC Physician Relations Director  
303-869-2028

Natalie Cherry  
Sky Ridge Physician Relations Manager  
720-225-2315

This is not a comprehensive list of pediatric specialists, but includes physicians within a five-mile radius of Sky Ridge.  
Go to [skyridgemedcenter.com](http://skyridgemedcenter.com) for a complete list.



# SKY RIDGE MEDICAL CENTER PEDIATRIC RESOURCES

## Allergy & Asthma Care & Prevention

### Daily at this location

Lora Stewart, MD  
10099 RidgeGate Pkwy., #400, Lone Tree, CO 80124  
PH: 303-706-9923/F: 303-706-0904

## Blue Sky Neurology

### Wednesday, all day

Michael Pearlman, MD  
10099 RidgeGate Pkwy., #480, Lone Tree, CO 80124  
PH: 303-781-4885/F: 720-274-0064

## Children's Eye Physicians

### Daily at this location

Justin Arbuckle, MD  
Christopher Bardorf, MD  
Justin Cohen, MD  
Diana DeSantis, MD  
Adrienne Ruth, MD  
Anna Steele, MD  
9094 E. Mineral Ave., #200, Centennial, CO 80112  
PH: 720-420-3636/F: 720-420-3637

## Pediatric Cardiology

### Daily at this location

Samuel Brescia, MD  
Douglas Christensen, MD  
David Miller, MD  
Jane Nydam, MD  
Michael Pettersen, MD  
10099 RidgeGate Pkwy., #300, Lone Tree, CO 80124  
PH: 303-860-9933/F: 303-839-5844

## Pediatric Endocrine Associates

### Daily at this location

Clifford Bloch, MD  
Alicia Marks, MD  
Sunil Nayak, MD  
8200 E Bellevue Ave., #510E  
Greenwood Village, CO 80111  
PH: 303-783-3883/F: 303-783-3800

## Rocky Mountain Pediatric Endocrinology

### Daily at this location

Kyla Koontz, MD  
Aristides Maniatis, MD  
7336 S Yosemite St., #200, Centennial, CO 80112  
PH: 720-420-3636/F: 720-420-3637

## Rocky Mountain Pediatric Gastroenterology

### Daily at this location

Jose Barrios, MD  
Chad Best, MD  
Kyle Kusek, MD  
Sandy Oesterreicher, MD  
Carrie Reynolds, MD  
Ted Stathos, MD  
9224 Teddy Lane, #200, Lone Tree, CO 80124  
PH: 303-790-1515/F: 303-790-1989

## Rocky Mountain Pediatric Pulmonology

### 1st Thursday all day, 2nd Wednesday all day, 3rd Thursday evening

Margarita Guarin, MD  
Lee Rusakow, MD  
9224 Teddy Lane, #200, Lone Tree, CO 80124  
PH: 303-831-9853/F: 303-832-3533

## Urology Associates

### Daily at this location

Nina Casanova, MD  
Stan Galansky, MD  
10450 Park Meadows Dr., #202, Lone Tree, CO, 80124  
PH: 303-733-8848/F: 303-733-0106



Rocky Mountain  
Hospital *for* Children

At Sky Ridge Medical Center

